



# FRV

## ARMIDALE EAST BESS FACT SHEET

### Overview

Leading Australian solar developer, FRV Services Australia (FRV), is pursuing development approval for a Battery Energy Storage System (BESS) in Armidale East Creek, located approximately 16km east of Armidale NSW. The proposed Armidale East BESS is located within the New England Renewable Energy Zone (REZ). The proposed project will be built on a maximum development site of 10 hectares and is expected to have a capacity of 500MW.

### The Project

The Armidale East BESS will utilise the latest technology in the sector, complying with all safety and hazards parameters that are highly regulated by the Australian Government. Design and layout of the project will be compliant with local planning laws and will specifically aim to minimise any potential environmental, cultural heritage and neighbour impacts.

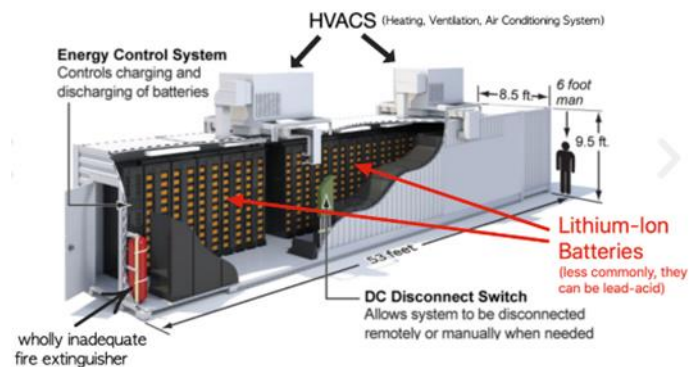
Construction and operation of the project would involve the following key components:

- 500MW BESS including:
  - Battery containers
  - inverters
  - transformers
  - cooling systems if required
  - fire suppressions systems
  - switch rooms
- switch yard
- new access road to the site
- parking site, site office and amenities for operational use.

Temporary infrastructure, including construction facilities, site offices and amenities, tool and material storage sheds, construction staff car parking, component laydown areas and truck parking and unloading would also be required.



Figure 1.1 Example of a BESS development



1.2 Artist impression of a BESS

### The Benefits

#### Increases clean energy storage

The BESS improves the stability and reliability of the electricity network by storing energy during periods of low demand, and dispatching energy during periods of peak demand and emergency events.

#### Create jobs

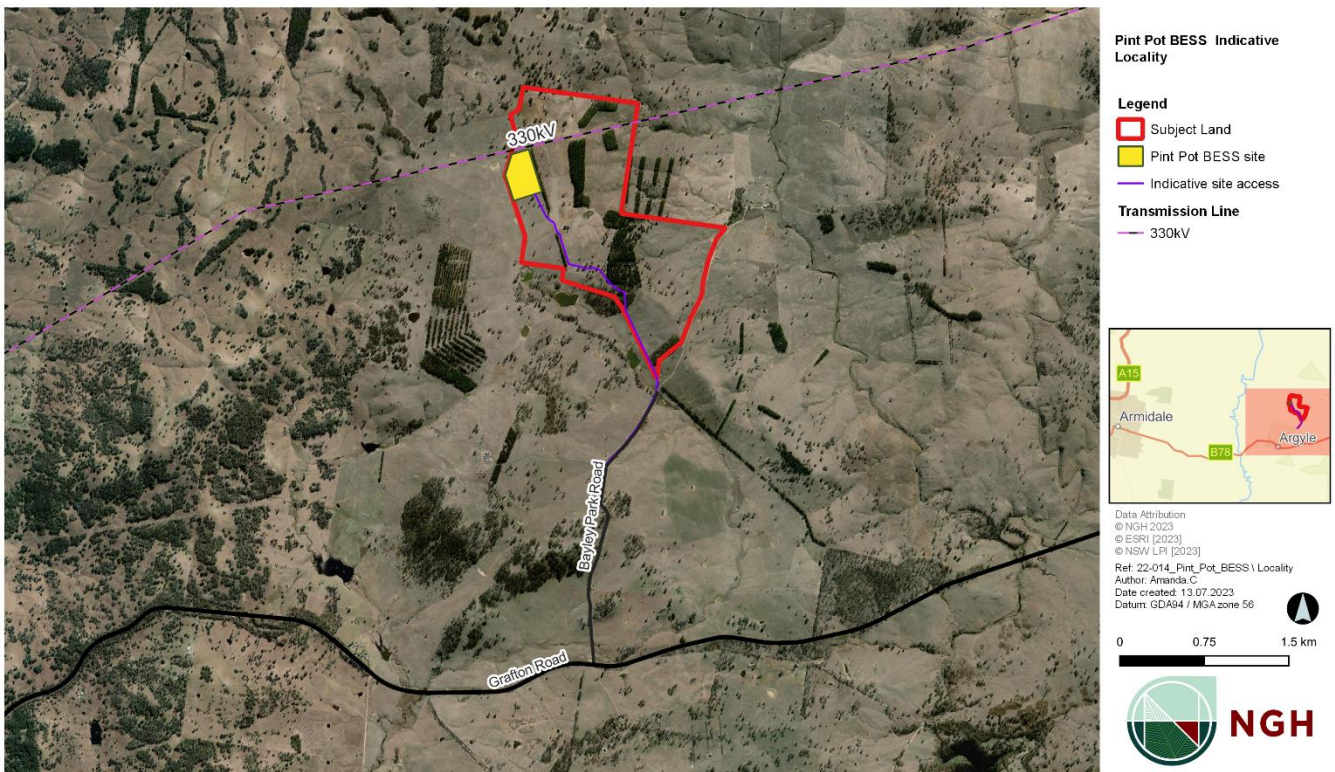
Approximately 70 full time equivalent (FTE) construction jobs and 5 FTE operational jobs.

#### Income for local area

Diversify income and increase revenue to ancillary services such as food and accommodation to the local area.

## Armidale East BESS site map

The proposal site (outlined in red) would have a development footprint of about 10 hectares. Its location makes for an easy connection to the existing transmission line to the north of the site (drawn in pink).



1.3 Proposed Armidale East BESS site location

### The planning and approval process

Planning for the Armidale East BESS is still in the early stages, and FRV is in the process of developing a Scoping Report. The Scoping Report will determine which technical assessments will be included within the Environmental Impact Statement (EIS) and is part of the early stage in the process of a development proposal.

### Questions and feedback

Input from the community will help formulate the Scoping Report. For more information and to register to receive project updates, notice of upcoming community information sessions and to provide feedback visit the project website at [www.armidaleeastbess.com.au](http://www.armidaleeastbess.com.au) or email the team at [engage@nghengage.com.au](mailto:engage@nghengage.com.au).

### About FRV

FRV Services Australia Pty Ltd is a subsidiary of Fotowatio Renewable Ventures (FRV), founded in Spain. FRV is a leading global developer of renewable energy solutions for a cleaner and more sustainable future.

Since entering the Australian market in 2010, FRV has primarily focused on renewable development projects along the east coast, with eight operational photovoltaic (solar) plants, two under construction and five in development across Queensland, NSW Victoria.

FRV is an Independent Power Producer (IPP), fully owning its assets from development to construction and through to operation, for the entirety of their lifetime. FRV is entirely committed to their projects and does not develop projects to sell post-construction.



Powering a Sustainable Future